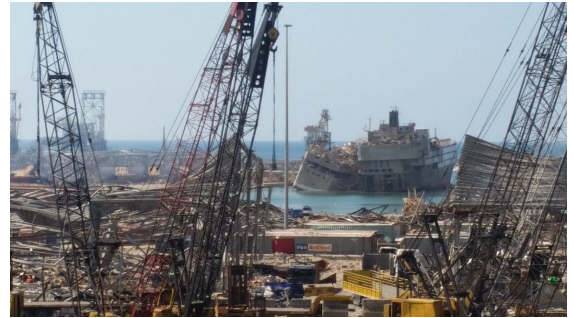


# Beirut Blast: Response and Rehabilitation

**Theme: Shelter / refugees**

**Country: Lebanon**

Timeline: 1 year



**Key objectives:**

- Rehabilitation of public spaces, including street and side alleys, affected by Beirut Blast
- Provision of emergency employment to hundreds to impoverished Lebanese, as well as other communities
- Quick results achieved in rehabilitation, provision of solar energy, improvement of public services
- Comprehensive shelter repair.

**Key activities:**

- Emergency employment / Cash for Work for hundreds of people under the supervision of local municipalities - rehabilitation of streets, repair of loose electrical cables, shelter repairs
- Cash for Rent for families displaced by the blast
- Rehabilitation of public services and public buildings
- Improvement of living conditions, e.g. solar lighting
- Supporting local economic development.



**Project rationale:**

Explosion of over 2,500 tons of ammonium nitrate stored in the port of Beirut was one of the largest man-made disasters in recent decades and caused major damage to the adjacent urban areas. According to UN-Habitat, with whom PCPM cooperates closely in Lebanon, over 200 buildings were destroyed or are uninhabitable.

**Related PCPM activities:**

- Emergency Shelter Repairs for 200 apartments. PCPM was one of the first shelter NGOs to respond to the explosion; first shipment of shelter kits arrived two days after the blast.
- 5,000 persons displaced by the blast received Cash for Rent assistance through the UN-Habitat / PCPM joint program.
- Urban rehabilitation project 1.5-2km from the blast site.
- Provision of equipment support to Beirut Fire Brigade. Rehabilitation of a Fire Station in Burj Hammoud.
- Provision of solar lighting for public buildings.



**Indicative project budget (USD):**

Cash for Rent assistance for 1,000 families	\$1,500,000
Rehabilitation of 100 damaged apartments	\$150,000
Urban rehabilitation / Cash for Work	\$150,000
Upgrade / repair of public buildings	\$50,000 +



**PCPM contact persons:**

dr Wojtek WILK  
CEO  
wwilk@pcpm.org.pl

Mrs. Zofia KWOLEK  
Fundraising Director  
zkwolek@pcpm.org.pl